

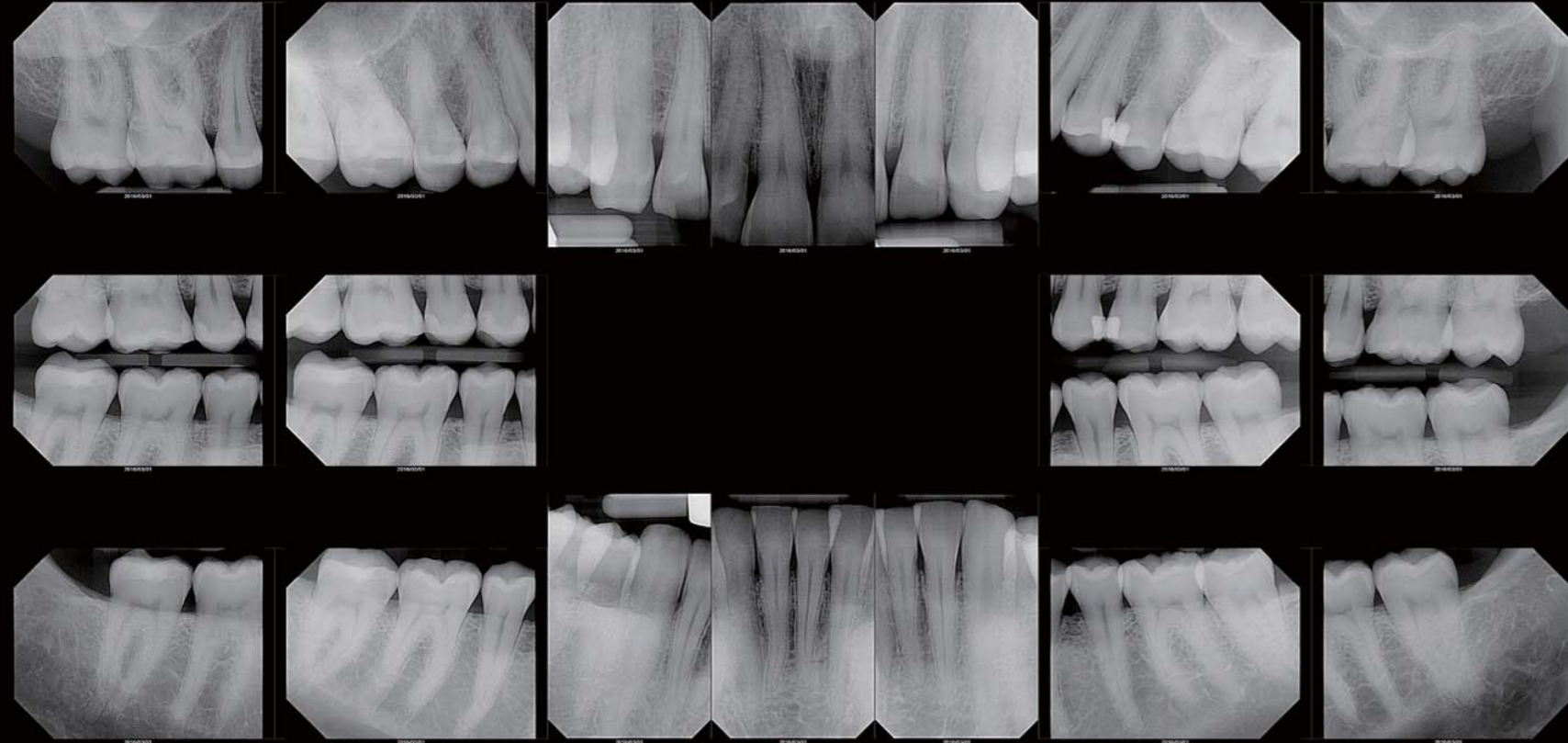


INTRAORAL IMAGING
RIOSensor


Outstanding intraoral sensor

Digitalize your intraoral examination with RIOSensor.
Streamline workflow with high-resolution digital images.

 High-resolution images



Captured by XrayVision 4 - Apteryx Inc

 Ergonomic design

 Plug and Use

 Durability

 Size 1 & 2



Specifications are subject to change without prior notice.

| RIS500 Specifications | Size 1 | Size 2 |
|-----------------------|----------------------------------|----------------------------------|
| Outside dimensions | 39x25mm | 42x30mm |
| Imaging area | 30x20mm | 34x26mm |
| Pixel size | 20x20µm | 20x20µm |
| Sensor Technology | Advanced CMOS with Optical fiber | Advanced CMOS with Optical fiber |
| Scintillator | Csl. | Csl. |
| Number of pixels | 1.5 Megapixels | 2.2 Megapixels |
| Image resolution | 25 lp/mm | 25 lp/mm |
| Connection | USB 2.0 high speed | USB 2.0 high speed |
| Cable length | 2 meters | 2 meters |



Ray Europe

Ray Europe GmbH

Otto-Volger-Strasse 9b, 65843 Sulzbach (Taunus)

Tel. +49 (0)6196 7656 102

Email info@rayeurope.com

Web www.rayeurope.com

Ray Co., Ltd.

332-7, Samsung1-ro, Hwaseong-si, Gyeonggi-do, 18380, Korea

Tel. +82 31 605 1000 **Web** www.raymedical.com

EC REP DONGBANG ACUPRIME

1 Forrest Units, Hennock Road East, Marsh Barton, Exeter EX2 8RU, U.K

Tel. +44 1392 829500 **Fax** +44 1392 823232

RBS-S02 (rev.1)
Design and specifications are subject to change without notice

